

BC-20

UV Corona Discharge Camera

Dual F.O.V Lens: 13.3 x 10.6° (Wide-angle) & 5 x 3.75° (Telephoto)

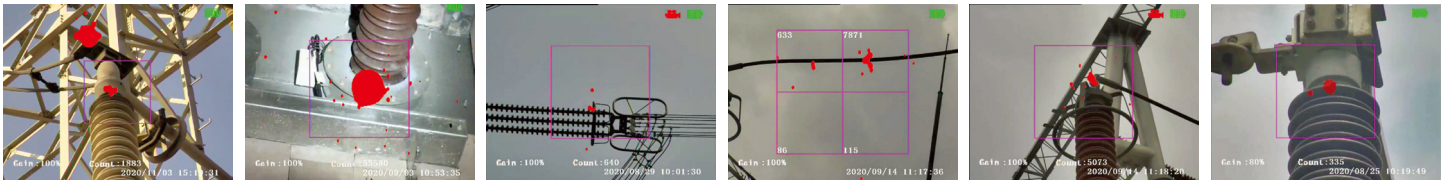
The corona discharge camera is used as a diagnostic tool to control critical components in an electrical network. Using a susceptible ultraviolet radiation camera such as BC-10 / 20 / 30 series, corona and ultraviolet radiation can be recorded to evaluate the state of a device. Installation faults or failures in high voltage equipment carry a very high risk, so preventive maintenance saves high costs on repairing. Partial discharges may also occur due to structural defects or problems in the insulation.

BC-20 UV Camera is a powerful dual-channel UV imaging equipment with a dual FOV Lens, 13.3 x 10.6° (Wide-angle) & 5 x 3.75° (Telephoto). The Lens are built-in for flexible applications. It can accurately locate corona and arc to display and record the photon number of discharge 24 hours a day. Also, it can realize the prospective and pre-maintenance inspection of electrical equipment such as substations, transmission and distribution lines, generators and railway lines. BC-20 is an ergonomic design, professional and lightweight device; 1.80 Kg. High UV sensitivity performance but no sensitivity to sunlight during operation in daylight. Thanks to the high-performance UV detector and filter to give high sensitivity. It can detect weak UV signals: high precision image registration and fusion algorithm are employed to obtain accurate, sharp images and videos. It provides data recording and software for data transmitting & report making. It is also helpful in mining, petroleum, heavy industry, fire prevention, insurance, detection services and other industries.



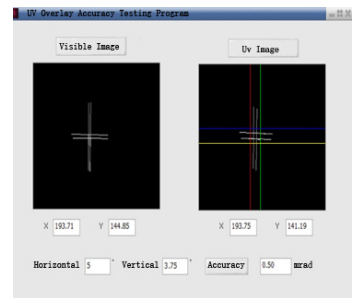
- High Sensitivity UV Signal Detector
- Accurate Photon Counting
- Expert Diagnostics
- Ergonomic Design

Screen Display



1. FEATURES

High Sensitivity Detector	High-performance Filter	Accurate Photon Counting	Accurate Positioning
A high-performance, no attenuation UV detector is very powerful for weak UV signals generated from discharge corona.	High precision 240-280nm cutoff wavelength UV filter, which has excellent out-of-band rejection performance and will not interfere with sunlight.	Five types of photon-counting boxes for quantitative analysis. Single or multiple areas corona photons counting.	High precision image fusion algorithm can accurately locate the corona position; the overlay accuracy is 0.5mrad.
Ergonomic Design	Super Configuration	Expert Diagnostics	Considerate After-sales Service
One press button, 64G TF card, 2 x 4.5 hours (with two batteries) continuous operation; compact size design only 1.8kg; portable and enable one-hand operation.	Standard configuration with 2 pcs batteries. Other Tripod, image report unit, temperature and humidity sensors, distance sensors, GPS etc., are optional to save costs and purchase flexibility.	Provide test reports based on US Electrical Power Research Institute (EPRI) field guide.	1+1-year warranty*; free repair* with spare parts at a minimal price. Backup unit* provided during the repair or service period. *Terms & Conditions applied*



2. TECHNICAL SPECIFICATIONS

UV - OPTICAL PROPERTIES

Field Of Vision (W x S)	13.3° x 10.6° & 5° x 3.75° Switchable
Spectral Range	240nm ~ 280nm
Minimum Discharge Sensitivity	1Pc/10m
Minimum RIV Sensitivity	3.6dBµV (RIV) @ 10m
Minimum UV Sensitivity	2 x 10 ⁻¹⁸ watt/cm ²
Focus Range	1.5m ~ ∞
Focus	Auto

VISIBLE - OPTICAL PROPERTIES

Minimum Visible Light Sensitivity	0.1 Lux
Focus Range	1.5m ~ ∞
Focus	Auto

DISPLAY AND OUTPUT

Modes	Combine (UV+VIS), UV only, Visible only
UV / Visible Overlay Accuracy	Better than one milliradian
Type	5-inch colour Transflective Sunlight readable LCD
Brightness	450 cd/ m ²
Resolution	736 x 576
Status Information Display	Battery, Gain, Counting Number, Date, Focus, Thresholds Alarm

CONTROLS AND OPERATION

Status Modes	Real-Time, Sleep, Power Off
Continuous Operation	Continuous Operation, No Cooling System
Controls Command	One For One Keyboard Input

SAVE AND PLAYBACK

Video	Provided
Still Images	Provided
Data Save	32G TF Card
Video Format	MP4
Stills Format	JPG
Playback Function	Video & Still Images

CHARACTERISTICS

Detector	Life Without Attenuation
Images Fusion	Images Fusion Algorithm
Colours	Multiple Colours Selectable

POWER SOURCE

Battery	Rechargeable Battery
Working Hours	≥4.5h
Adapter	DC14.8V 15.4W

ENVIRONMENTAL

Storage and Operation Temp	-20°C ~ +55°C
----------------------------	---------------

VISIBLE - OPTICAL PROPERTIES

Dimensions (L x W x H)	24.4cm x 13.5cm x 9.6cm
Weight	1.8kg

3. ACCESSORIES



Battery x 2 pcs



Charger



Hand Strap



Card with Adapter



Microphone



Video Cable



AC/DC Adapter



Carrying Case



M300 Drone
(Options)

Mellon (Singapore) Pte. Ltd.

#11-05, Gateway East, 152 Beach Road, Singapore, 189721
sg@mellongp.com

Due to our policy of continual product development, we reserve the right to amend the specifications of all mentioned products without notice.