

BC-30

Multi-Spectral (UV+IR+VI) Cameras

Corona Defects Detection Systems for Substations Transmission Lines/ HV Electrical Lab/ Electric and Power LIVE INSPECTION

BC-30 Daytime Corona Cameras is a non-destructive testing (NDT) technology widely used to detect corona defects for Substations and transmission lines.

BC-30 employs UV detecting technology, out-of-band rejection UV filter technology and visual optical fusion algorithm technology. It can eliminate the disturbance of sunlight background and detect wear UV signals generated by corona.

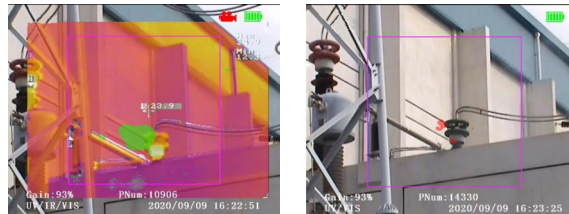
BC-30 is an advanced multispectral camera with the combination of a UV camera, an infrared (IR) camera and a visible light camera allows performing a corona and thermal inspection simultaneously and efficiently.



No tailing, pinpointing for precise positioning
Photons counting for quantitative analysis
Adjustable UV gain from 0-100%
Daytime and night application
High Overlay Accuracy
UV, IR & Visible Camera
5 inch Large deluxe reflective 640*480 pixels LCD
Closed enclosure, low heat, continuous stable operation

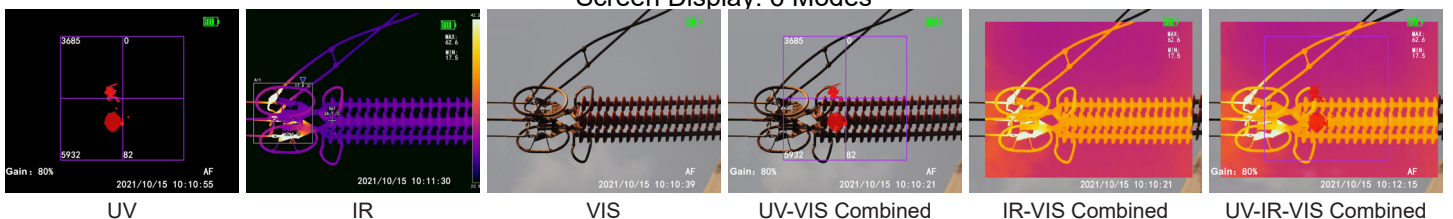
1. FEATURES

High Sensitivity UV Sensor High-performance UV Sensor can detect weak Corona signal, 240-280nm out-of-band rejection Technology able to use in both daytime and night.	UV Photon Counting 5 Kinds of ROI available. 4 sub ROI can give individual distribution of photons and accurate photon numbers obtained to precisely analyze severe defects.	Precise Defects Positioning The one milliradian overlay accuracy can give the fusion of visible, IR, UV images. By adjust gains to obtain pinpoint UV signal and analyse the exact location of the defects.
Adjustable UV Gain Gain adjustable. If used for integrated development, you can adjust and read the current UV gain voltage through the serial port.	Still Pictures and Video Still pictures and videos can be recorded and played back. The 32G TF card can store all data for further analysis.	Simultaneous and Efficient It is the Integration of faults, jointly locating partial discharges and abnormal temp spots.
Rugged Reliable casing Rugged, reliable casing, applicable to the severe atmospheric environment for continuously stable operation. Reliable material & craftsmanship to ensure excellent performance.	Ergonomic Design The camera is a compact design with a built-in Li battery. The one key/function operation is easy to use. Portable, 2.9 kg. Standard tripod mounting hole. Large size sun shading board.	High Pixels IR Sensor It features with 640x480 pixels Infrared Sensor with $\pm 2^{\circ}\text{C}$ accuracy to display temperature points and their position in real-time.



Show both corona and temperature defects in the same location

Screen Display: 6 Modes



2. TECHNICAL SPECIFICATIONS

UV - OPTICAL PROPERTIES

Field Of Vision (W x S)	10° x 8°
Spectral Range	240nm ~ 280nm
Minimum Discharge Sensitivity	1Pc/10m
Minimum RIV Sensitivity	3.6dB μ V (RIV) @ 10m
Minimum UV Sensitivity	2 x 10 ⁻¹⁸ watt/cm ²
Pixel	720 x 576
Focus Range	1.5m ~ ∞
Focus	Auto

VISIBLE - OPTICAL PROPERTIES

Minimum Visible Light Sensitivity	0.1 Lux
Focus Range	1.5m ~ ∞
Focus	Auto

IR - OPTICAL PROPERTIES AND DISPLAY

Pixels	640 x 480
Temp Range	-20°C ~ +600°C
Temp Accuracy	±2 or ±2%
Display Modes	Combine (UV+Vis, IR+Vis, UV+IR), UV only, IR only, Vis only
Display Type	5.7-inch Color Transflective Sunlight Readable LCD
Display Brightness	800 cd/m ³
Field of View	12.4° x 9.9°

SAVE AND PLAYBACK

Video	Provided
Still Images	Provided
Data Save	32G TF Card
Video Format	MP4
Stills Format	JPG
Playback Function	Video and Still Images

CHARACTERISTICS

Detector	Life Without Attenuation
Images Fusion	Images Fusion Algorithm
Colours	Multiple Colours Selectable

POWER SOURCE

Battery	Rechargeable Battery
Working Hours	≥2 Hours
Adapter	DC14.8V (18.5W)

ENVIRONMENTAL

Storage and Operation Temp	-20°C ~ +55°C
----------------------------	---------------

PHYSICAL PARAMETERS

Dimensions L x W x H	229mm x 131mm x 105mm
Weight	2.8kg

3. ACCESSORIES



Battery x 2 pcs

Charger

Hand Strap

Card with Adapter

AC/DC Adapter

Carrying case

Mellon (Singapore) Pte. Ltd.

#11-05, Gateway East, 152 Beach Road, Singapore, 189721
 sg@mellongp.com

Due to our policy of continual product development, we reserve the right to amend the specifications of all mentioned products without notice.